



Beijing CBT Optics Equipment Co., Ltd



Catalogue

www.cobtecinternational.com



COMPANY

>> > INTRODUCTION

Founded in March 2004, COBTEC is a high-tech enterprise specializing in the business of optical devices. At the beginning, CoBTec imports the optical device from USA, Europe and Russia to distribute them in China.

After years of development, CoBTec has established an independent R&D team in designing the optical devices, which have been used in public security, fire fighting, emergency rescue, environmental monitoring, anti-terrorism, border defense, prisons and other fields.

In 2011, CoBTec was registered and all these products are promoted under this brand. These products includes night vision, military thermal camera, range finder, vehicle mounted cameras.

2011: Night Vision, Night Vision Goggle, Night Vision For Pilots, Laser Range Finder

2012-2013: Holographic Sight, Digital Sight

2014-2015: Fire Fighting Thermal Camera

2016 - 2018: HD Thermal Binocular And Thermal Riflescope

2019: Fusion Thermal

2020: Temperature Measuring Thermal For Anti-COVID19



Company Branches

2009, CoBTec Hong Kong was established

2017, Zhuhai CoBTec Software Technology Co.,Ltd was established

2020, CoBTec Dongguan was established

Exclusive Distributor in China / Cooperation Brand

ATN , Armasight, Tasco, Bushnell, Leupold, NPZ, LUNA, Konus

Exhibitions and Shows

GPEC (Germany)	February 18-20, 2018	IDEAS (Pakistan)	November 24-27, 2018
IWA (Germany)	March 8-12, 2018	IDEX (UAE)	February 21-25, 2019
DSA (Malaysia)	April 16-21, 2018	IQDEX (Iraq)	March 7-10, 2019
Eurosatory (France)	June 8-10, 2018	Millipol (France)	November 19-22, 2019
Army (Russia)	August 21-23, 2018	IDEX (UAE)	February 21-25, 2021

Credentials



CHINA SECURITY & PROTECTION INDUSTRY ASSOCIATION, CSPIA

Membership Certification

To Beijing CBT Optics Equipment Co., Ltd

In accordance with the Articles of Association, your company is approved to be a member of the Association. This certificate is hereby issued.

Serial number of association : NO.5760

CHINA SECURITY & PROTECTION INDUSTRY ASSOCIATION, CSPIA

Date of issue: March 15th, 2022

Validity: March 31st, 2025

Muilti-function Thermal Binocular

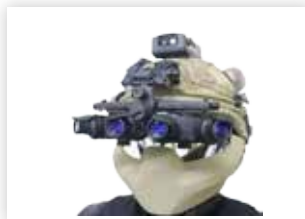
FTB675L



It is a thermal binocular built with independent thermal and CMOS channel for the day and night ovsservation pupose. With 75mm lens, it can observe longer distance. GPS and LRF work together to locate the target by its coordinates.

Features

- ❖ Thermal and low light CMOS,GPS, E-compass , WIFI
- ❖ Built-in Laser Range finder
- ❖ 640X512 resolution , 12 um
- ❖ 75mm lens, 10X continous magnificaiton in CMOS mode
- ❖ Light weight and compact
- ❖ Motorized focus (far andnear)
- ❖ Target Positioning system



Fusion Thermal Binocular

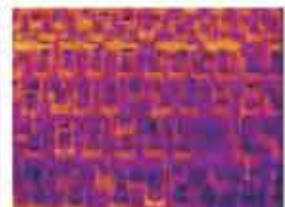
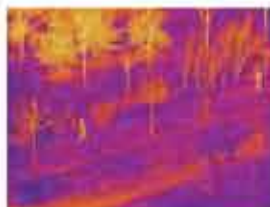
FTB640



Equipped with low light CMOS sensor and the thermal sensor (resolution: 640×512), OLED display (800×600), it has fusion, thermal and CMOS image for different occasion and tasks.

Features

- ✧ Fusion, Thermal, low light CMOS, GPS, WIFI, E-compass
- ✧ Photos and video recording
- ✧ Built-in reticle for tracking the target
- ✧ Motorized focus (far and near)
- ✧ 5x optical magnification, 2x, 4x zoom
- ✧ Light weight, compact



Handheld Thermal Binocular

TB675



Features

- ✧ Military standard thermal binocular
- ✧ Long distance detection range
- ✧ HD thermal image; 75mm lens
- ✧ Multiple functions, easy operation
- ✧ I R resolution 640×512 , OLED Display 1024×768
- ✧ Video and taking pictures
- ✧ NETD: 35mk; motorized focus: far and near
- ✧ IP67 water proof



HD Thermal Binocular

TB350



Features

- ✧ Military standard thermal binocular
- ✧ Light weight, compact and tripod mounted
- ✧ NETD: 35mk
- ✧ Lens: 50mm
- ✧ Detection range: up to 2500 m
- ✧ OLED display resolution: 1024 × 768pixels
- ✧ Integrated video recording, taking picture
- ✧ Motorized focus: far and near
- ✧ 14 kinds of thermal color for surveillance
- ✧ WiFi with APP for real time video transmission



Thermal Riflescope / Monocular /Clip on M400



M400 thermal riflescope is designed for battle field and it can be used as monocular after its LRF and rail is removed . After its lens is changed, it can be used as clip on thermal imager.

Features

- ❖ 384X288,640X512 IR sensor
- ❖ OLED display (1024*768)
- ❖ 5 patterns of reticles & 4 colors of reticles
- ❖ IP67 Protection, shock proof
- ❖ Wifi & E-compass
- ❖ Can be used on AK47, M16, HK416 , PKM rifles



Fusion Thermal Binocular

FTB640L/FTB384L



Features

- ❖ Target Positioning
- ❖ Thermal, low light CMOS, GPS, compass, WIFI
- ❖ Photos and video recording
- ❖ Built-in reticle for tracking the target
- ❖ Built-in Laser Range finder, 2KM or 6KM
- ❖ Motorized focus (far and near)
- ❖ 5x optical magnification, 2x, 4x, zoom



PSQ20C Dual Sensor Fusion Thermal Imager M400



The PSQ20C Enhanced Night Vision Goggle (ENVG) provides increased capability by incorporating image intensification and long-wave infrared sensors into a single, helmet-mounted passive device.

It combines the visual detail in low light conditions that is provided by image intensification with the thermal sensor's ability to see through fog, dust, and foliage that obscure vision.



Clip On Thermal Imager

PAS29C



The CoBTec Thermal Imager PAS29 C is a revolutionary miniaturized infrared thermal device which has the ability to convert almost any ordinary night vision device into a FUSION type system. FUSION systems combine the best aspects of thermal imaging with the best aspects of normal image intensified night vision devices into one system.

The PAS29 C can be adapted to work in conjunction with the following night vision systems: AN/PVS- 14, AN/PVS-7B/D, NVD-BNVD, NVD-BNVDG, AN/PVS- 15A/ C, AN/PVS- 18, AN/PVS-23, F5050, UNS-SR, AN/PVS-24, as well as many other systems.



Sniper Detector Laser Illuminator Night Vision Binocular V366L



Features

- ❖ Sniper detector
- ❖ GPS & Target location
- ❖ Laser illuminated night vision
- ❖ Laser range finder: up to 20KM
- ❖ See through the solar film of the car windows



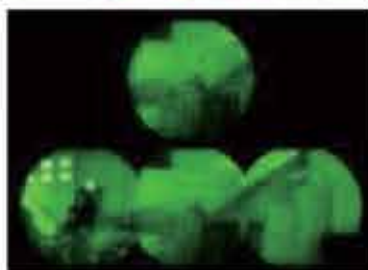
Full View Helmet Night Vision

PS18G4



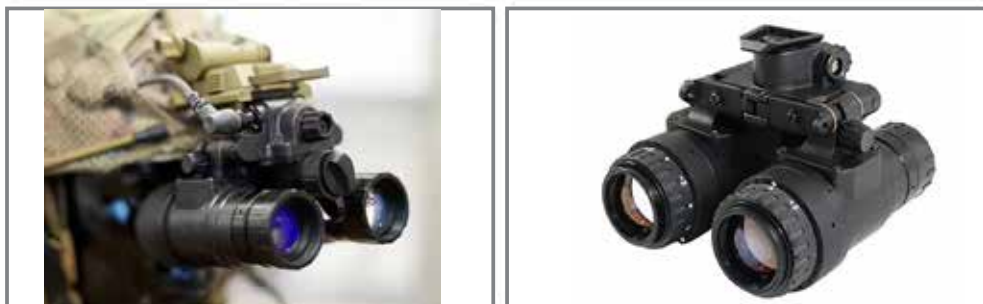
Four independent tubes work with independent lens. The two lens in the center works in the traditional way, whose direction is straightly forward to detect the target in distance. The other two tubes at the right or left side are designed for widening the field. The image from the right two tubes and the left two tubes can fuse to form a 120 degree view, which is a revolutionary development. The right two tubes and the left two tubes has its own independent imaging system and can be attached on a helmet mount.

It can also work as the handheld night vision whose interpupillary distance can be adjusted.



Low Light Night Vision Binocular

PVS31C



PVS31C is compact, rugged, which can be worn on the head or helmet mounted. And the left and right lens tubes can be turned 140° independently, which can realize the fast switching of operation mode under different light conditions. When you do not use the night vision instrument and turn it up to the helmet, it will automatically shut down to reduce the stray light emitted by the eyepiece so as to avoid exposing its own target.

Features

- ❖ Image intensifier tube: Optional 18mm Gen2/Gen3 (green / black-white)
- ❖ Resolution: 50-72 LP(minimum)
- ❖ Photoelectric sensitivity: 1800-2200 (minimum)
- ❖ SNR (Signal to noise ratio): 25-28(minimum)
- ❖ FOV(field of view): $40^{\circ} - 51^{\circ}$
- ❖ Diopter: +2-6



Night Vision Goggle

YSG



Features

- ✧ Multi-purpose, extremely rugged and compact
- ✧ Hand held, head mounted, helmet mounted
- ✧ Military standards
- ✧ Light sensor for bright lightoff
- ✧ Ergonomic design, convenient to use
- ✧ Fast detection of targets
- ✧ Gen 2 + or Gen 3 tube



10KM Laser Range Finder

2VK-C



Features:

- ✦ YAG laser, wave length 1.064 micron; Valid ranging can be up to 10KM
- ✦ Measure accuracy: 1 meter
- ✦ One laser can measure two targets
- ✦ Passing light with different wave can be selected
- ✦ Illuminated reticles at night
- ✦ The data of 10 targets can be stored for checking
- ✦ Record of the laser working times
- ✦ Water proof, shock proof
- ✦ Finding Range : 80 meter- 14000meter
- ✦ Magnification: 7X

1500M Binocular LRF

LRF-A



Features:

- ❖ Range: 1500 meters
- ❖ Fast and accurate measurement with 1 m accuracy
- ❖ Phase-Corrected BAK4 Roof Prisms
- ❖ Fully Multi-Coated Optics
- ❖ Field of View: 105m at 1000m; 340ft at 1000 yards
- ❖ Instant Object Focusing Beyond 109 Yards
- ❖ Bright 5.25mm Exit Pupil
- ❖ Waterproof & Fogproof
- ❖ Individual Focus & Diopter Adjustment
- ❖ Twist-Up Eyecups
- ❖ Waterproof & Anti-fog
- ❖ Tripod interface

SWAT Helmet Camera



Feature:

- ◆ Real time video transfer by 4G/5G;
- ◆ Preview video on Mobile APP;
- ◆ IP 67 protection; Explosion proof;
- ◆ GPS to show the coordinates on Google Map
- ◆ One-key SOS alarm;



Binocular Handheld

KNS7X50



Key Features

It has Spherical lens and prism made of optical glass, multi coated optic. Fold down eyecups and made of rubber. Nitrogen purging and Makrolon housing. Waterproof: 2 hours @1.5 meters depth and also shock resistant: 1.5-meter height in sand. It also capable of range finder illuminated compass (ranging reticle with illuminated compass) and UV protection.

Field of view (at 1000m)	: 132m
Lens	: Fully multi-coated
Magnification	: 7x
Field angle	: 7°
Exit pupil diameter	: 7mm
Prism	: Porro
Eye pupil adjustment	: Yes
Body style	: Semi-aromatic thermoplastic
Objective diameter	: 50mm
Surface treatment	: Rubber
Standard	: ISO
Accessories	: Carrying case and operating manual in English/Chinese

Binocular Tripod Mounted

WS10x42



Optical Zoom (Magnification)	: 10x
Objective lens	: 42mm
Field of view	: 102m @ 1000m
Water/fog proof	: Yes
Optics coating	: Multi coated
Prism quality	: Barium crown glass
Weight	: 702g
Provided with	: Tripod *Extended length:1000mm *Folder length: 370mm *Weight: 400g
Standard	: ISO
Accessories	: Lens cloth, Carrying case, Neck strap, Lens cap operating manual in English/Chinese

Laser Range Finder

HML8



Key Features

It has tripod thread for using of tripod.

Type	: Multiple coated glass optics
Magnification	: 8x
Field of view	: 6.5°
Diopter adjustment	: ± 5
Laser protection for observer	: Laser wavelength: 1535nm
Minimum measuring range	: 10meters
Maximum measuring range	: 5500meters
Accuracy	: ± 1 m
Laser classification	: Laser class 1
Display	: OLED display with reticle
Power source	: Rechargeable battery
Battery lifetime	: >3,000 measurements (per battery set, at 20°C operating temperature)
Standards	: MIL-STD-810F
Water resistance	: IP67(30 minutes, 1m)
Operating temperature	: -30°C~+60°C
Storage temperature	: -40°C~+80°C
Provided with	: Tripod *Extended length: 1670mm *Folder length:620mm *Weight: 1.87kg
Accessories	: Standard transport bag and operating manual in English/Chinese & one charger.

Hand Held Laser Range Finder

HML21



Key Features

It has diopter adjustment function with target priority switch system for measuring overlapping subjects. It Comes with 2 set of rechargeable battery with one charger.

Actual field of view	: 7°
Maximum measurement distance (Static target)	: 1100m
Minimum measurement distance	: 5m
Maximum measurement distance (Moving target)	: 650m
Accuracy (Actual distance)	: ±0.5m(5-99m) ±1m(100m-1100m)
Magnification	: 7x
Power source	: CR2 Lithium battery along with automatic power shutoff function
Environment condition	: IP x 4
Laser classification	: Class I
Temperature tolerance	: -10oC to +60oC
Standard	: ISO
Accessories	: Lens cleaning kit, Carry bag and operating manual in English/Chinese

Night Vision Goggles

YSG



Type	Night visioin goggles
Magnification	1X
Proshield lens coating	Yes
Field of view	40° or better
Range of Focus	0.25m to infinity
Controls	Direct
Minimum features	automatic brightness control, bright light cut-off, infrared illuminator, IR indicator, low bty indication
Tube Specification	
Generation	3 rd
Photocathode type	multi-Akali
Resolution, line pairs per millimeter(lp/mm)	Minimum 45
MTTF-Mean time before failure, hours	Minimum 9,000
Accessories	Soft carry case
	Operator's manual
	Head mount assembly
	Rechargeable battery
	Helmet mount assembly
	5X lens

Aviator Night Vision Goggles

AVS9C





Generation	Gen 3
Field of View	40°
Magnification	1X
Objective Lens	25mm
Objective lens/F#	F1.23
Minimum Resolution(cy/mr)	1.1
Minimum Brightness gain(f1/f1)	2800
I2 Tube Minimum Resolution	68lp/mm
Eyepiece Lens	25mm
Eye relief	25mm
Diopter adjustment	+2 to -6
Interpupillary adjustment	50-75mm
Vertical adjustment	25mm
Fore-and-Aft adjustment	27mm
Tilt Adjustment	10°
Automatic Breakaway	10 to 15g
Weight of Binocular	496g
Battery type	Two AA battery
Operating temperature range	-32°C to +52°C or higher
Accessories	include OEM provided standard accessories including Soft carry case, Operator manual, helmet mount assembly, rechargeable battery, lens cover and lens cleaning material
Compatibility	Gallet LH250 ANVIS helmet mount adapter aircraft ANVIS lighting system
Manufacture Date	New produced

Compass CPS-AH23



Function

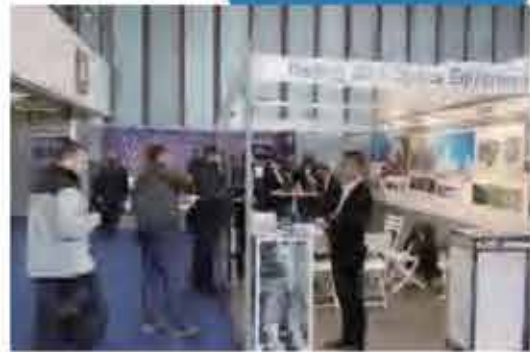
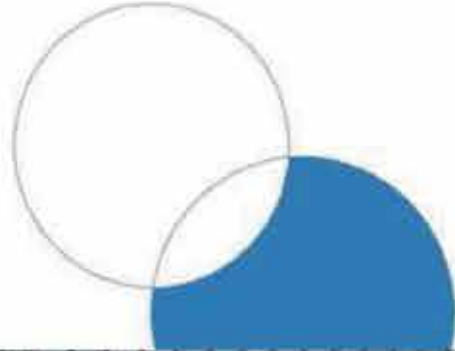
It has Scale of (1:25000) Line map ranging, orientation refers to the north, orientation, slope, azimuth, angle of pitch, mapping ruler, magnifying glass. 1:25,000 scale. Direction symbols contain the luminous material. The upper cover has a conducting line for positioning. The dial is rotatable.

For a more accurate direction finding, the box is filled with liquid damping, so that the magnetic needle is reset as soon as possible, with the function of protecting shock and protecting the shaft tip against wear. With three functions of pointing, positioning and surveying and mapping, it is often used in hunting, exploration, camping and other sports transportation, movement, and is a tool in geology, mining, forestry, survey, irrigation and water conservancy, construction, tourism and other fields. Suitable for field travel to determine the direction and orientation.

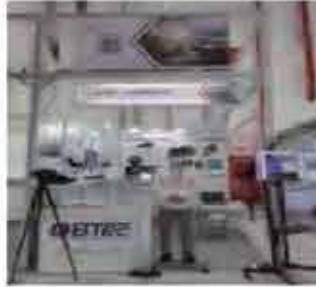
Key Features

1. It comes with degree, minutes, second and mils which helps navigation easy.
2. Meter scale in the edge of compass.
3. Illumination in needle with important mark.

Material	: Zinc Alloy
Shape	: Portable
Color	: Dark Green/Olive Green
Dimension (folded)	: 7.5x5.8x2.5cm
Weight	: 79g
Standard	: ISO









Beijing CBT Optics Equipment Co., Ltd

www.cobtecinternational.com

Tel : 010-84440108/09

Address: Room 1501-03, Building C Tiantongtai technology finance
valley, No.29 Kechuang 13 st, BDA, Beijing

Email: sales@cobtecinternational.com